

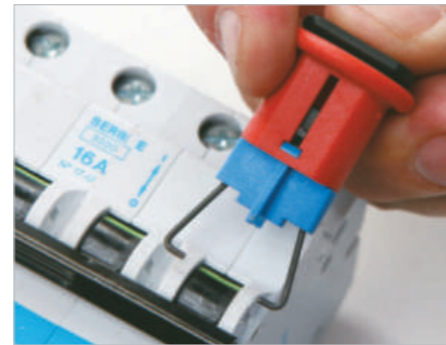


MINIATURE CIRCUIT BREAKER LOCKOUT

- a. Made from engineering plastic strengthened nylon PA.
- b. Fit most existing types of European and Asia Circuit Breaker.
- c. Easily installed with the aid a push button or rotate roller.
- d. Available for single and multi-pole circuit breaker
- e. Recommended to use in combination with a padlock for added safety.
- f. Can use padlocks with a shackle diameter up to 7mm.



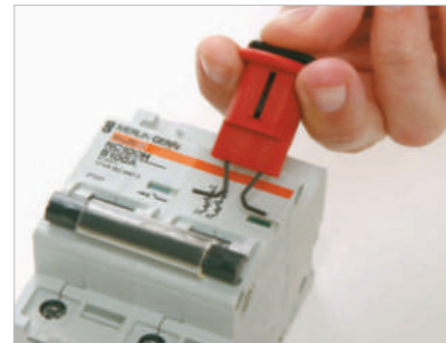
BD-D01(Pin Out Standard)



BD-D02(Pin In Standard)



BD-D03(Tie bar Lockout)



BD-D04(Pin Out Wide)

Part Code	Description
BD-D01	POS (Pin Out Standard), hole spacing 12mm
BD-D02	PIS (Pin In Standard), hole spacing 12mm
BD-D03	TBLO (Tie bar Lockout)
BD-D04	POW (Pin Out Wide), hole spacing 20mm



We have tested 750 Types of circuit breaker and our MCB lockouts fit most of all.

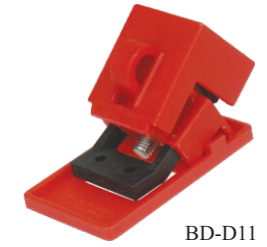
(like MCB Allen Bradley, ABB, Cutler Hammer, General Electric, Siemens, Square and so on)



CLAMP-ON BREAKER LOCKOUT

- a. Made from rugged polypropylene PP and impact modified PA.
- b. Use thumbscrew to clamp lockout securely onto switch tongue, then pull cover and lock in place to prevent clamp from being loosened.
- c. New blade design provides tighter grip with less torque on thumb screw.
- d. Detachable cleats expand the range of applicable breakers.
- e. The lockouts can take padlocks with a shackle diameter up to 7mm.

Part Code	Description
BD-D11	Can lock handle width 18mm
BD-D12	Can lock handle width 42mm



BD-D11



BD-D12

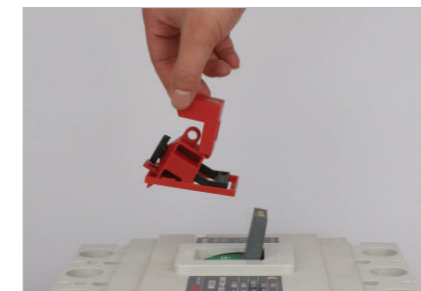


BD-D13

LARGE CLAMP-ON BREAKER LOCKOUT

- a. Made from rugged polypropylene PP and impact modified PA.
- b. Use thumbscrew to clamp lockout securely onto switch tongue, then pull cover and lock in place to prevent clamp from being loosened.
- c. New blade design provides tighter grip with less torque on thumb screw.
- d. Detachable cleats expand the range of applicable breakers.
- e. The lockouts can take padlocks with a shackle diameter up to 7mm.

Part Code	Description
BD-D13	Can lock handle width 72mm

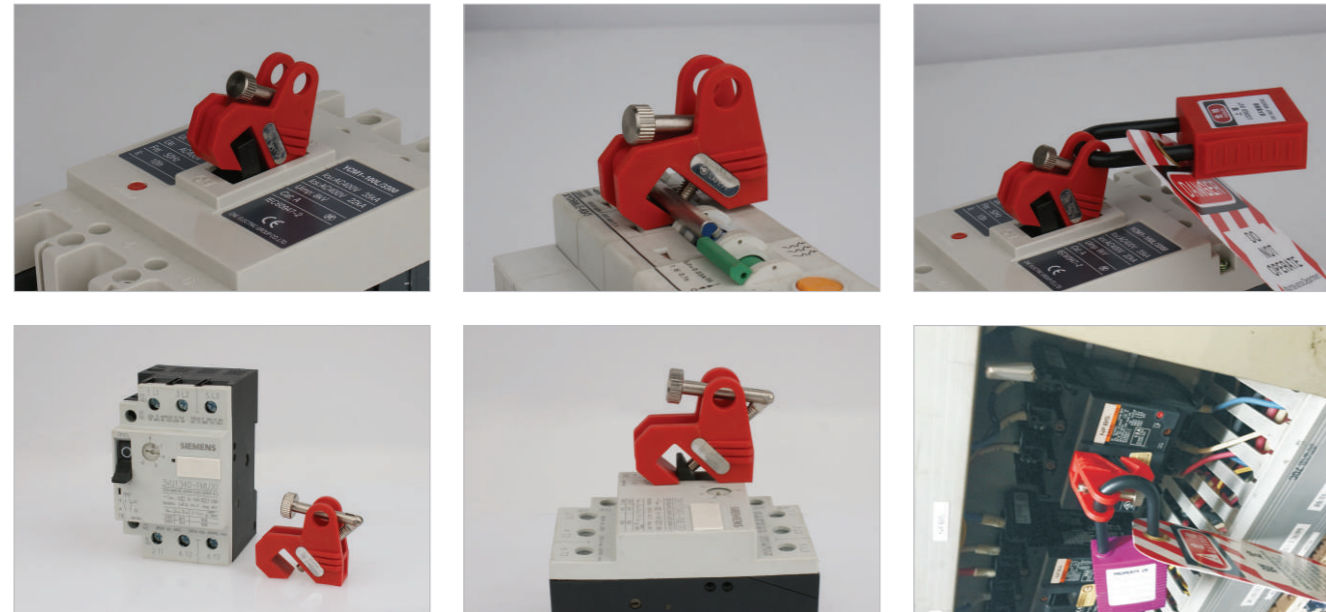




MULTI-FUNCTION MINIATURE BREAKER LOCKOUT

- a. Made from engineering plastic strengthened nylon PA and chrome plated brass screw.
- b. With locking screw, no need other tools to lock.
- c. Widely used: applicable to all kinds of small and medium sized MCCB, and any miniature circuit breaker.
- d. Can be customized stainless steel brand.

Part Code	Description
BD-D14	Locked with 1padlock, lock shackle 7mm



Appearance
Function Patent



BD-D14

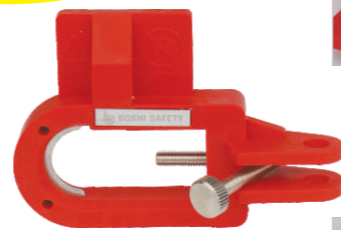
LARGE TYPE CIRCUIT BREAKER LOCKOUT

- a. Made from engineering plastic strengthened nylon PA and chrome plated brass screw.
- b. With locking screw, no need other tools to lock. The unique design of the U stainless steel sheet makes it more firm.
- c. Widely used: for a large variety of MCCB (handle thickness 20mm) and special button type of circuit breaker, BD-D16L is suitable for few closed old long MCCB.
- d. Can be customized stainless steel brand.

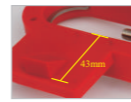
Part Code	Description
BD-D16	Locked with 1padlock, lock shackle 7mm
BD-D16L	With "L" can be locked closing old longer MCCB Locked with 1padlock, lock shackle 7mm



Appearance
Function Patent



BD-D16



BD-D16L



MULTI-FUNCTION CIRCUIT BREAKER LOCKOUT

- a. Made from rugged reinforced nylon and chrome plated brass screw.
- b. Comes with locking screw, can lock conveniently by itself without tools.
- c. Widely used, suitable for middle size circuit breaker(handle width 20mm).
- d. Unique U shape stainless steel insert plate, can ensure there is no swing after lock.
- e. Can be customized stainless steel brand.

Part Code	Description
BD-D15	Can accommodate one safety padlock with shackle diameter 7mm

Appearance
Function Patent



BD-D15



With Pedal



BD-D15W

Appearance
Function Patent

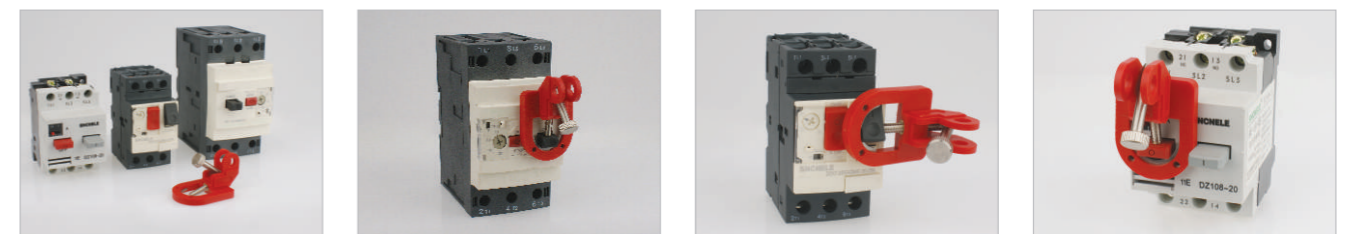


Without Pedal

MULTI-FUNCTION CIRCUIT BREAKER LOCKOUT

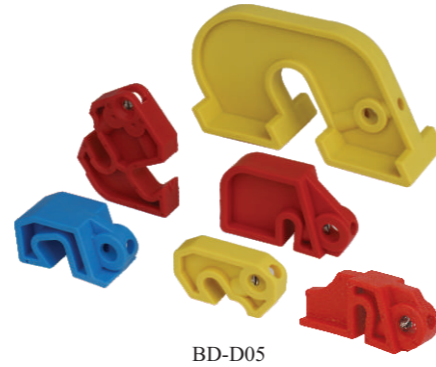
- a. Made from rugged reinforced nylon and chrome plated brass screw.
- b. Comes with locking screw, can lock conveniently by itself without tools.
- c. Widely used, suitable for button circuit breaker protector, as picture (handle width 20mm).
- d. Unique U shape stainless steel insert plate, can ensure there is no swing after locked.
- e. Can be customized stainless steel brand.

Part Code	Description
BD-D15W	"W" means there is no pedal under the lock bottom,can accommodate one safety padlock with shackle diameter 7mm

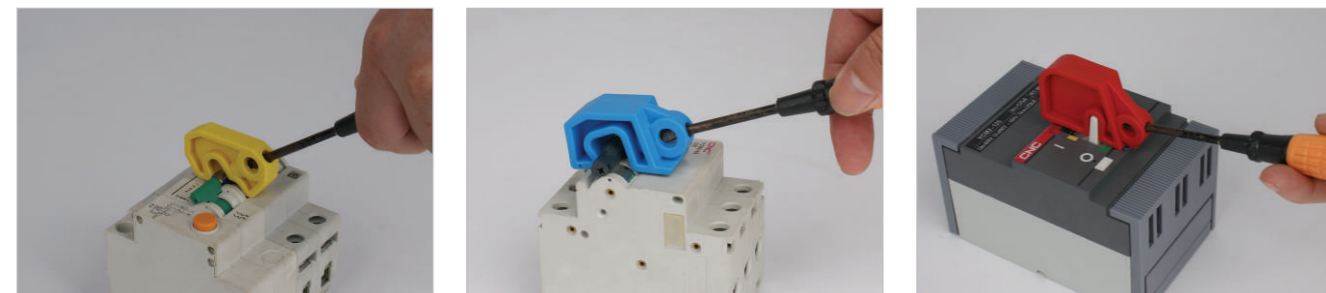
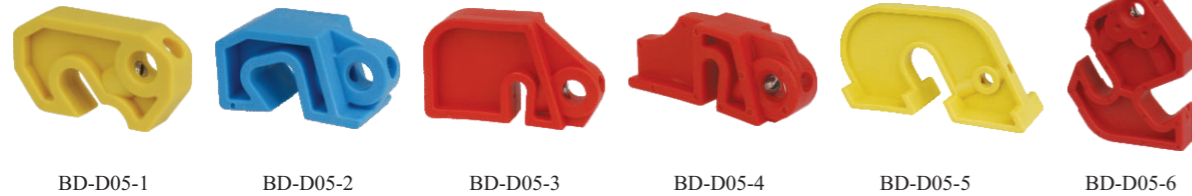


MOULDED CASE CIRCUIT BREAKER LOCKOUT

- a. Made from rugged reinforced nylon PA.
- b. Can lock it with screw driver.
- c. Can accommodate one safety padlock with shackle diameter ≤ 7 mm.
- d. Can lock all kinds of circuit breakers.



Part Code	Description
BD-D05	Means one series, each type one piece, 6 pieces in total.
BD-D05-1	Suitable for single pole miniature circuit breakers with handle width 7.7mm
BD-D05-2	Suitable for 2 to 4 poles miniature circuit breakers
BD-D05-3	Suitable for mini and middle size circuit breakers with handle width 5mm
BD-D05-4	Suitable for mini and middle size circuit breakers with handle width 5mm
BD-D05-5	Suitable for large size circuit breakers
BD-D05-6	Suitable for mini size circuit breakers with handle width 9.3mm middle size circuit breakers with handle width 12mm



BD-D05-1

BD-D05-2

BD-D05-3



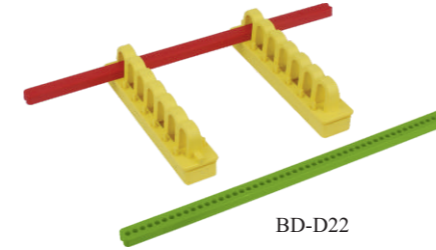
BD-D05-5

BD-D05-6

BD-D05-6

480V~600V BREAKER LOCKOUT (BREAK BLOCKER COMPONENTS)

- a. Made from engineering plastic alloy.
- b. Back self-adhesive track can fix on the distributor forever—clean the surface of the distributor no hole needed.
- c. To lock the special large or unique shape switch, the length of the rod is 19cm.
- d. Red stop rod means the switch is in the off state, green stop rod means the switch is in on state.



BD-D22

Part Code	Description
BD-D22	Can accommodate two safety padlocks with shackle diameter 7mm



SNAP-ON BREAKER LOCKOUT

- a. Made from rugged polypropylene and impact modified nylon PA.
- b. Snap in place and apply lock.
- c. Double control design, suitable for different sizes switch button.
- d. Suitable for seldom mini circuit breaker with holes on the two sides of the handle.

Part Code	Description
BD-D21	Can accommodate one safety padlocks with shackle diameter 7mm

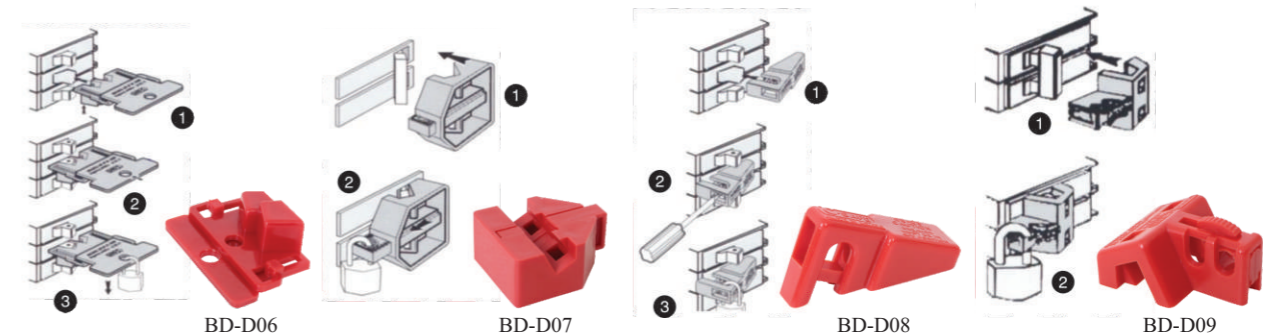


BD-D21

SNAP-ON BREAKER LOCKOUT

- a. Made from engineering plastic reinforced nylon PA.
- b. Easy using—snap in right position, it is locked.
- c. Suitable for seldom miniature circuit breaker with the special handle. (as picture)

Part Code	Description
BD-D06	A single pole lockout, requires a switch breaker with a recessed hole in it
BD-D07	A double pole lockout, requires the breaker to be connected with a cross bar
BD-D08	A single pole lockout, does not requires a switch breaker a recessed hole in it
BD-D09	A double pole lockout, similar to D07 but slightly larger to accommodate larger breakers



BD-D06

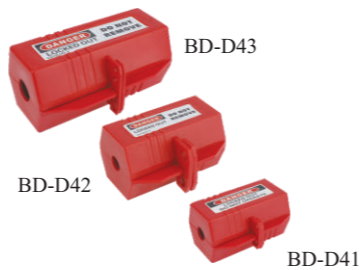
BD-D07

BD-D08

BD-D09

ELECTRICAL PLUG LOCKOUT

- Made from rugged polypropylene.
- Double open and hexagon lockout design, suitable for all kinds of industrial plugs.
- Accommodates 2 to 4 pieces padlocks with shackle diameter less than 7mm to lock it at the same time.



Part Code	Description
BD-D41	51mm(height)*51mm(thickness)*89mm(width), for cable diameter 13mm
BD-D42	65mm(height)*65mm(thickness)*118mm(width), for cable diameter 20mm
BD-D43	83mm(height)*83mm(thickness)*178mm(width), for cable diameter 25mm

ELECTRICAL / PNEUMATIC PLUG LOCKOUT

- Made from ABS material.
- Double open and quadrilateral lockout design, suitable for all kinds of electrical and pneumatic plug (max diameter 89mm, max length 127mm) and air hose external screw thread adaptor.
- The hole in the lockout can lock cable and the bent down pneumatic external screw thread accessory.
- Accommodates 4 pieces padlocks with shackle diameter less than 7mm to lock it.



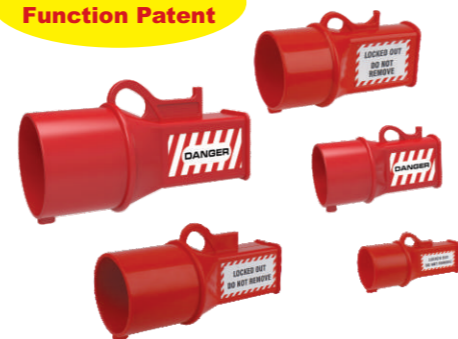
BD-D31

Part Code	Description
BD-D31	97mm(height)*95mm(thickness)*170mm(width), can lock 5 kinds of pneumatic plug lockout with diameter: 9.5mm, 10.4mm, 11.4 mm, 12mm, 18.2mm

INDUSTRIAL WATERPROOF SOCKET LOCKOUT

- Made from PP material, to lock industrial socket bottom.
- With hasp to lock industrial waterproof socket.
- Can accommodate several padlocks to lock it at the same time with hasp.

Appearance
Function Patent



Part Code	Description
BD-D45	Means one series ,each type one piece, 5 pieces in total
BD-D45-1	Lockout body diameter 40mm, suitable for mini size industrial socket
BD-D45-2	Lockout body diameter 44mm, suitable for mini and middle size industrial socket
BD-D45-3	Lockout body diameter 50mm, suitable for middle size industrial socket
BD-D45-4	Lockout body diameter 63mm, suitable for middle and large size industrial socket
BD-D45-5	Lockout body diameter 73mm, suitable for large size industrial socket



INDUSTRIAL WATERPROOF PLUG LOCKOUT

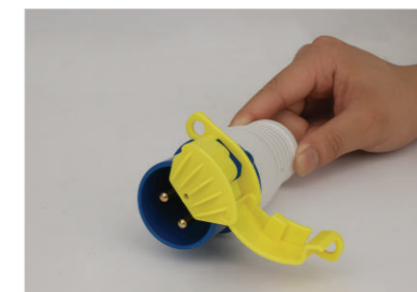
- Made from engineering plastic PC material.
- Suitable for locking kinds of industrial waterproof plugs.

Appearance
Function Patent



BD-D46

Part Code	Description
BD-D46	Suitable for 16-125A industrial waterproof plug



LOCKOUT BAG

Ideal device for locking out junction boxes and elevator controllers.

- Made from wear resisting polyester cloth.
- With PVC liner to prevent others to contact the button of the elevator controller.
- With enough space can lock many kinds of driving controller button, or all kinds of special large size plug and accessories.
- Warning labels available.



BD-D71

Part Code	Description
BD-D71	To lock by adjust the bag mouth, 6 padlocks or hasps can be equipped with



MAN HOLE LOCKOUT BAG

- Made from wear resisting polyester cloth.
- With 5 meters cable lockout, can lock kinds of man hole.
- Print warning sign on surface.

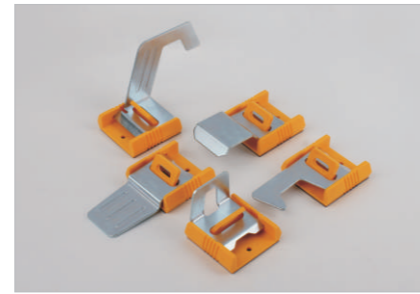


BD-D72

Part Code	Description
BD-D72	Cable lockout need to buy separately

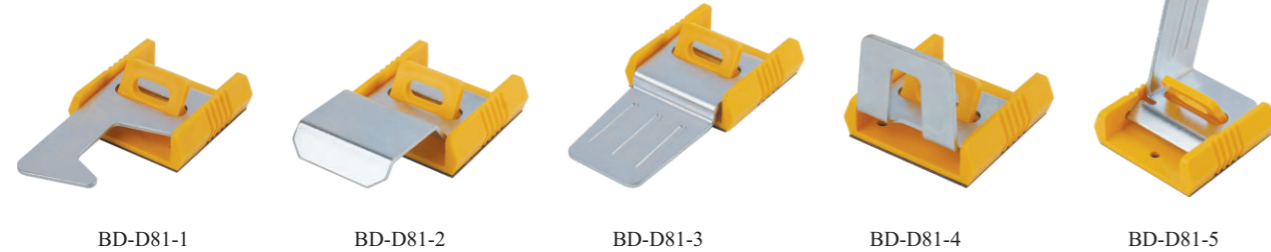
MULTIFUNCTION INDUSTRIAL ELECTRICAL LOCKOUT

- a. Made from engineering plastic alloy and A3 galvanized steel plate.
- b. Can lock kinds of non-standard electrical products or distribution cabinet.
- c. It is fixed by 3M glue or screw.
- d. Different shape lockouts can be custom made.



Appearance
Function Patent

Part Code	Description
BD-D81-1	Lock knob switch, change over switch
BD-D81-2	Lock button switch, the lock hole of the distribution cabinet
BD-D81-3	Lock cabinet door, electrical handle hole, low voltage drawer cabinet and so on
BD-D81-4	Lock switch handle, change over switch of the drawer cabinet
BD-D81-5	Lock knife switch, handle switch and so on



ELECTRICAL HOLE LOCKOUT

- a. Made from engineering plastic PC, rubber, screw and extrusion sheet.
- b. Rotate the knob on the lockout, then the rubber is out of shape, it is locked.
- c. Can custom made kinds of rubber hole stopple to lock non-standard electrical hole and computer's power socket.
- d. Custom made different specification rubbers stopple according to electrical appliance hole to lock.

Appearance
Function Patent

Part Code	Description
BD-D82	To lock kinds of non-standard shape, handle holes and so on

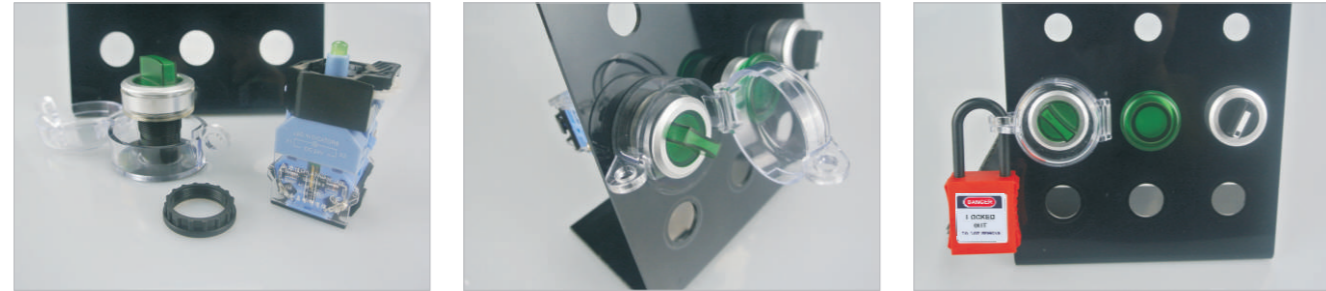




EMERGENCY STOP LOCKOUT

- a. Made from high strength transparent glass resin PC.
- b. Install on the controller button forever, avoid accidentally touch.

Part Code	Description
BD-D51	Height: 31.9mm; outer diameter: 49.6mm; install hole; inner diameter: 22mm
BD-D52	Height: 31.9mm; outer diameter: 49.6mm; install hole; inner diameter: 30mm



EMERGENCY STOP LOCKOUT

- a. Made from high strength transparent glass resin PC.
- b. Avoid unpick, install easily, install the base on the bottom of the emergency stop switch, can lock and remove at random.
- c. Install on the push or spiral release emergency stop button, avoid accidentally touch.
- d. When no need lock at ordinary time, leave the base at site, not affect the operation at all. Put the cover to lock the base if necessary.



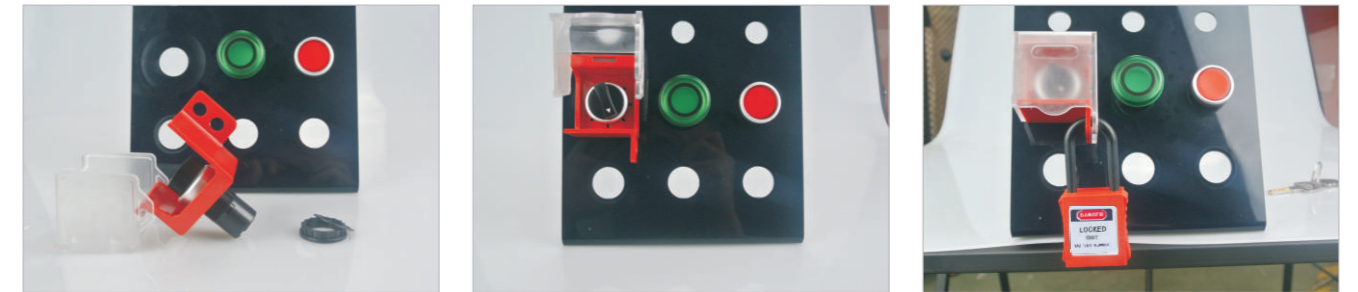
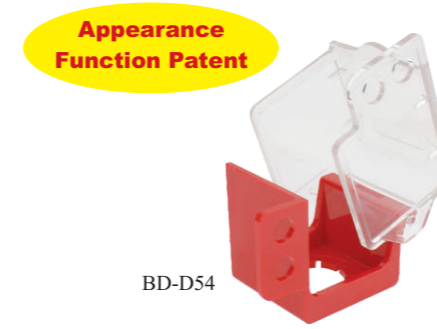
Part Code	Description
BD-D53	Four pieces in one set
BD-D53-1	Cover, height: 49.3mm; outer diameter: 60mm
BD-D53-2	Inner diameter: 22/30mm base
BD-D53-3	Inner diameter: 22mm stainless steel base
BD-D53-4	Inner diameter: 34mm semicircle base, base can custom made with 3M glue



EMERGENCY STOP LOCKOUT

- a. Made from high strength transparent glass resin PC.
- b. Install on the push or spiral release emergency stop button, open it then operate, avoid accidentally touch.

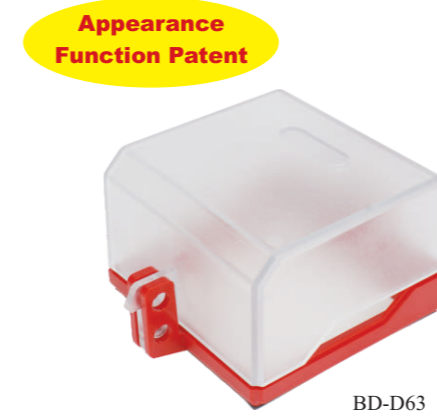
Part Code	Description
BD-D54	Length: 50mm, width:47.3mm, height: 50mm Installing hole inner diameter: 22 or 30mm



LOCKABLE SOCKET COVERS

- a. Made from high strength transparent glass resin PC.
- b. Install on electrical appliance like wall switch or change over switch forever, open it then operate, avoid accidentally touch.
- c. Design holes on two sides. Can lock the wall plug, it is not easy to unplug.
- d. Can fix it by automatic screw or 3M double sided glue.
Hole dimension (length×width): 74mm×74mm.

Part Code	Description
BD-D63	Suitable for wall switch or change over switch



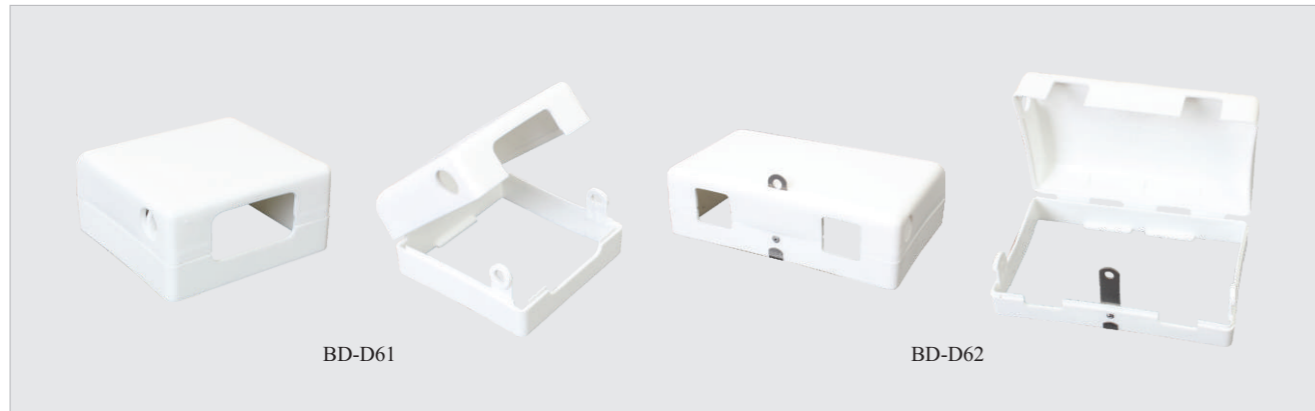
SOCKET SAFETY COVERS

Ideal device for keeping vital equipment plugged in and switched on.

- Made from engineering plastic PP.
- Available in two sizes to fit single and double sockets, single size will also fit standard light switches and some fuse holders.
- Simply loosen the screws on either side of the socket, position the lockable cover in place and re-tighten the screws.
- Can accommodate padlock with max shackle diameter 7mm.
- With the following two self-adhesive labels separately, stick on the safe cover, the dimension is 70mm×50mm and 130mm×50mm separately.



Part Code	Description
BD-D61	Single socket cover
BD-D62	Double socket cover

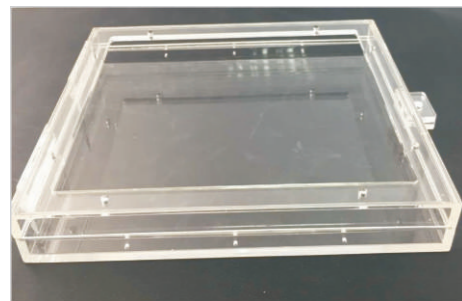


BD-D61

BD-D62

CONTROL PANEL LOCKOUT

- Made from acrylic panel.
- With support rack design, can operate the panel conveniently.
- Can fix it by automatic screw or 3M double-sided tape.
- It is custom made product, the base can be coated steel or transparent mask.



BD-D65

Part Code	Description
BD-D65	Can lock kinds of appliance's touch panel



ADVANCED LOCKOUT STATION

- Made from engineering plastic PC, one piece design, strong and durable.
- With 4 padlock positions, each position can accommodate 2 padlocks; 1 hasp, several tagouts, cable ties, etc.
- Station can be locked.
- With mask design.

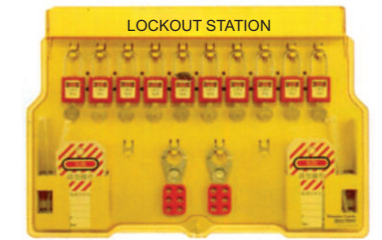


BD-B101

Part Code	Description
BD-B101	Width×height×thickness: 406×315×65mm

ADVANCED LOCKOUT STATION

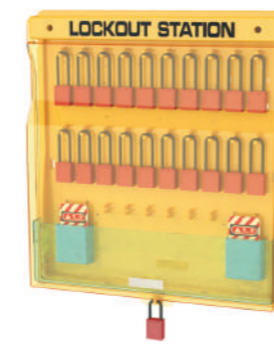
- Made from engineering plastic PC, one piece design, strong and durable.
- With 10 padlock positions, each position can accommodate 2 padlocks; 4 hasps, several tagouts, cable ties, etc.
- Station can be locked.
- With mask design.



BD-B102

Part Code	Description
BD-B102	Width×height×thickness: 558×393×65mm

Appearance
Function Patent



BD-B201

COMBINATION ADVANCED LOCKOUT STATION

- Made from engineering plastic PC, combined design, strong and durable.
- Can accommodate 20 padlocks, 6 hasps, several tagouts, cable ties and mini lockouts etc.
- Station can be locked.
- With mask design.

Part Code	Description
BD-B201	Width×height×thickness: 650×590×95mm

Appearance
Function Patent

COMBINATION ADVANCED LOCKOUT STATION

- Made from engineering plastic PC, combined design, strong and durable.
- Can accommodate 30 padlocks, several hasps, tagouts, cable ties and mini lockouts etc.
- Station can be locked.
- With mask design.

Part Code	Description
BD-B202	Width×height×thickness: 650×590×95mm



BD-B202