

GATE VALVE LOCKOUT

- a. Made from Engineering plastic nylon ABS.
- b. Lock the hand wheel diameter 25mm-330mm(1"-13") valve (As sheet description).
- c. Locked by one Padlock, lock shackle diameter ≤7mm.
- d. Color: red, other colors need to be customized. Tagout is available.



Part Code	Description
BD-F11	Valve rod diameter 25mm-64mm (1"-2.5")
BD-F12	Valve rod diameter 64mm-127mm (2.5"-5")
BD-F13	Valve rod diameter 127mm-165mm (5"-6.5")
BD-F14	Valve rod diameter 165mm-254mm (6.5"-10")
BD-F15	Valve rod diameter 254mm-330mm (10"-13")



NEW GATE VALVE LOCKOUT

**Appearance
Function Patent**

- a. Made from imported DuPont engineering plastics.
- b. The different size semicircle design, two parts can be combined into one when storing and carrying, reduce a half volume. Lock the hand wheel diameter 25mm-450mm(1"-18") valve (as sheet description).
- c. Locked by 4pcs padlocks, locked shackle diameter ≤7mm.
- d. Color: red, other colors need to be customized. Tagout is available.



Part Code	Description
BD-F11A	Valve rod diameter 25mm-64mm (1"-2.5")
BD-F12A	Valve rod diameter 64mm-127mm (2.5"-5")
BD-F13A	Valve rod diameter 127mm-165mm (5"-6.5")
BD-F14A	Valve rod diameter 165mm-254mm (6.5"-10")
BD-F15A	Valve rod diameter 254mm-330mm (10"-13")
BD-F15 plus	Valve rod diameter 330mm-450mm (13"-18")



ADJUSTABLE GATE VALVE LOCKOUT

- a. Made from polypropylene PP.
- b. Lock range can be adjusted. Lock the hand wheel diameter 25mm-165mm(1"-6.5") valve.
- c. Locked by one padlock, locked shackle diameter ≤7mm.
- d. Color: red, other colors need to be customized. Tagout is available.

Part Code	Description
BD-F16	Valve rod diameter 25mm-165mm (1"-6.5")



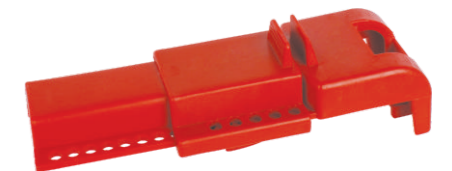
BD-F16



BUTTERFLY VALVE LOCKOUT

- a. Made from polypropylene PP.
- b. Lock the valve rod diameter 8mm-45mm(0.3"-1.8") butterfly valve.
- c. Locked by one padlock, lock shackle diameter ≤7mm.
- d. Color: Red, other colors need to be customized.

Part Code	Description
BD-F21	Handle width diameter 8mm-45mm(0.3"-1.8")

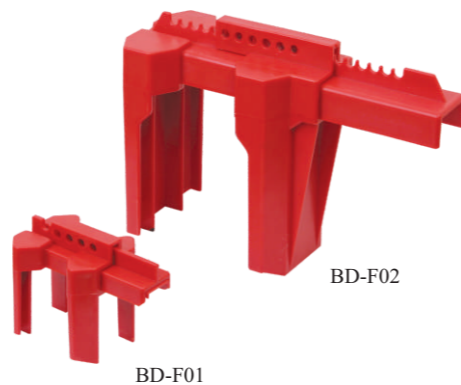


BD-F21



ADJUSTABLE BALL VALVE LOCKOUT

- a. Made from polypropylene PP.
- b. Applied Sizes:
 - a) BD-F01 locks out pipes from 13mm (1/2") to 64mm (2 1/2") in diameter.
 - b) BD-F02 locks out pipes from 50mm (2") to 200mm (8") in diameter.
- c. Padlock locked shackle max diameter: 9mm.
- d. Color: red, other colors need to be customized.



Part Code	Description
BD-F01	Suitable for 13mm (1/2") to 64mm (2 1/2") pipes
BD-F02	Suitable for 50mm (2") to 200mm (8") pipes

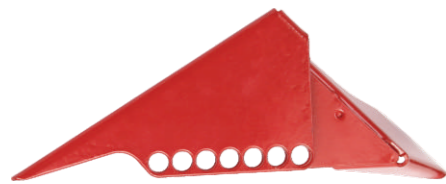


STANDARD BALL VALVE LOCKOUT

- a. Made from standard A3 steel plate, Surface treatment by high temperature spray plastic, not easy to rust.
- b. Single-piece design locks quarter-turn ball valves in OFF position, very compact and light weight solution.
- c. Applied size: two sizes fit most valves up to 76.2mm(3").
- d. Padlock locked shackle max diameter :10mm.
- e. Color: red, other colors need to be customized.



BD-F03



BD-F04

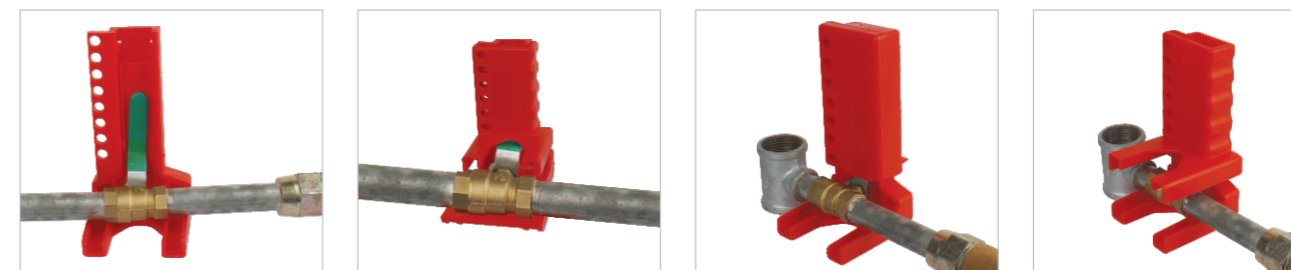
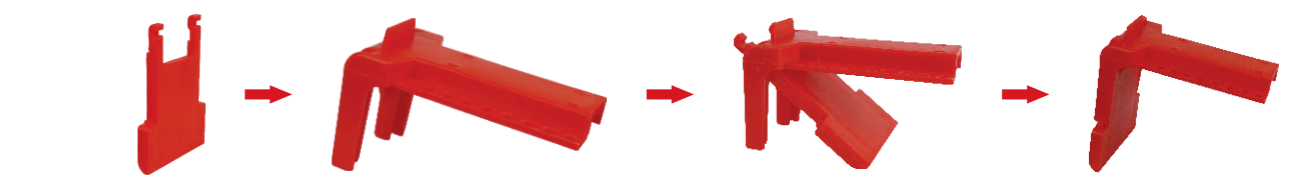
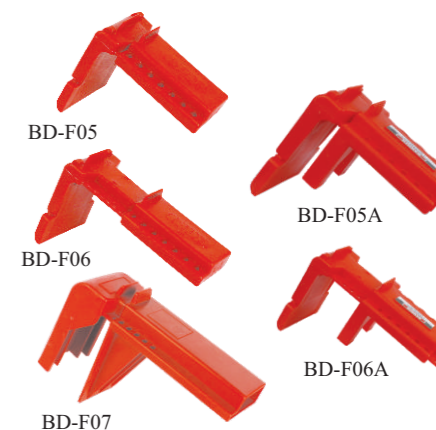
Part Code	Description
BD-F03	Suitable for 6.35mm(1/4") to 25.4mm(1") pipes
BD-F04	Suitable for 38.1mm(1 1/2") to 76.2mm(3") pipes



ADJUSTABLE BALL VALVE LOCKOUT

- a. Made from high temperature resistant, high strength hot plastic PP.
- b. Lock out double roll valves.
- c. With auxiliary rear gear parts, locked heightening extended ball valve.

Part Code	Description	
BD-F05	Suitable for 13mm(1/2") to 70mm(2 3/4") pipes	With auxiliary rear gear parts
BD-F05A		With auxiliary rear gear parts
BD-F06A		With auxiliary rear gear parts
BD-F07	Suitable for 73mm(2 4/5") to 215mm(8 1/2") pipes	



**Appearance
Function Patent**



BD-F08

ADJUSTABLE FLANGED BALL VALVE LOCKOUT

- a. Made from polypropylene PP.
- b. Locked the 6.35mm (1/4") to 140mm (5") flange ball valve after the handle is removed.
- c. Padlock locked shackle max diameter : 9mm.
- d. Color: red, other colors need to be customized.

Part Code	Description
BD-F08	Suitable for 6.35mm (1/4") to 140mm (5") flanged ball valves



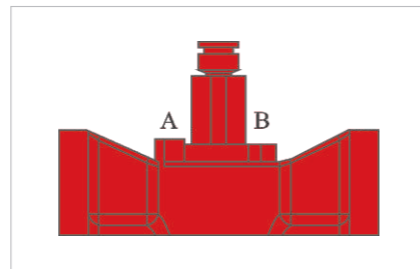
PLUG VALVE LOCKOUT

This plug valve lockout is newly developed to simply and effectively lock out plug valves.

- a. 4 sizes available, suitable for valve diameter from 25.4mm(1") to 203.2mm(8").
- b. Durable and vandal resistant.
- c. Small size, easy to be carried.
- d. Choose the right plug valve lockout by measuring the size of A and B.



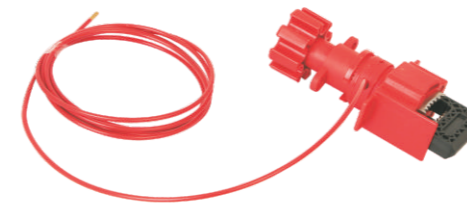
Part Code	Description
BD-F41	Suitable for valve diameter under 22mm(0.87")
BD-F42	Suitable for valve diameter from 23mm(0.9") to 34.9mm(1.37")
BD-F43	Suitable for valve diameter from 44mm(1.73") to 53.9mm(2.12")
BD-F44	Suitable for valve diameter from 55mm(2.17") to 63.5mm(2.5")



UNIVERSAL VALVE LOCKOUT

- a. Made from engineering plastic strengthened nylon PA and stainless steel.
- b. Fit the new open-ended clamp over the closed ring, used to lock out the large levels, T-shape handles and other hard-to-secure mechanical devices.
- It can be add various accessories to make the device suitable for a range of valves.
- c. Cable accessories can be used 3.2mm (1/8 ") PVC stainless steel metal cable set.
- d. Universal valve lockout used to max handle width 40mm (handle max thickness 28mm).
- e. Suitable for gate valve, ball valve, butterfly valve and so on.

Part Code	Description
BD-F31	Lock with quarter-turn ball valve for single arm
BD-F32	Two arms to lock out 3, 4 or 5-way valves
BD-F33	Using cable attachment for gate valves
BD-F34	For butterfly valves
BD-F35	Universal valve lockouts for most valves



BD-F31

Use the single arm to lock out quarter-turn ball valves



BD-F32

Use the two arms to lock out 3 4 or 5-way valves



BD-F33

Use the cable attachment to lock out valves



BD-F34

Fix the clamp on the hand shank to avoid the trigger from closing



BD-F35

Universal use for all types of valves